

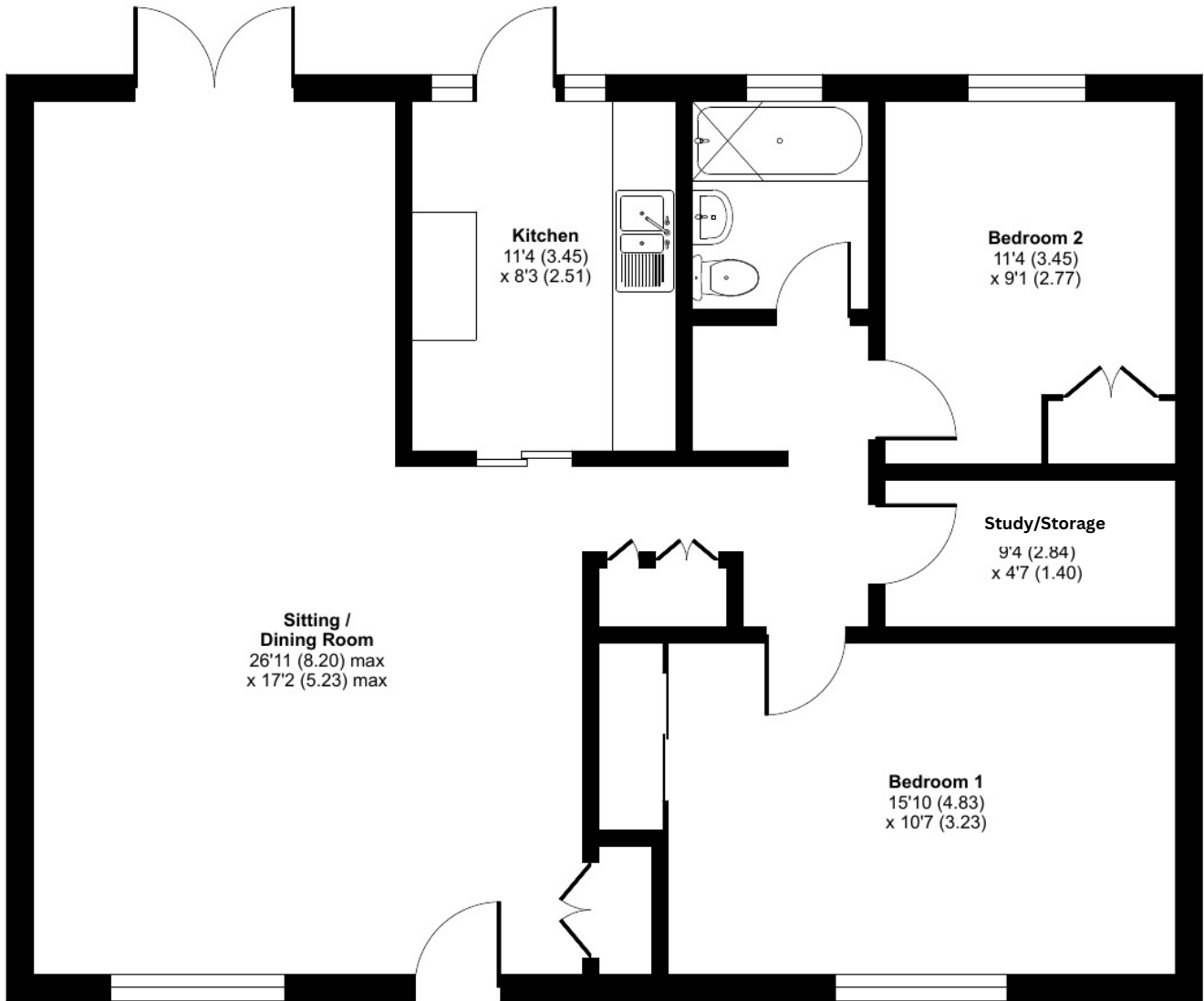
# 23 ROPER ROAD

TWO BEDROOM UNREFURBISHED BUNGALOW

90.3M2 (972 ft2)



HEYFORD PARK  
OXFORDSHIRE



GROUND FLOOR



Floor plan produced in accordance with RICS Property Measurement Standards incorporating International Property Measurement Standards (IPMS2 Residential). © nichecom 2023. Produced for nichecom REF: 975544

DISCLAIMER: These floor plans, images, specification and property details are intended to give a general indication and are indicative. Measurements are approximate, we advise that you do not use these dimensions for carpet sizes, appliances and furniture. Plot specific features may vary. Material build and finish may vary. All dimensions are + or - 50mm and plans are not to scale. Please consult our Sales Consultants for plot specific details.