



HEYFORD FIELDS



THE BRANDON

FOUR BEDROOM
TWO STOREY HOME
111m² (1202ft²)

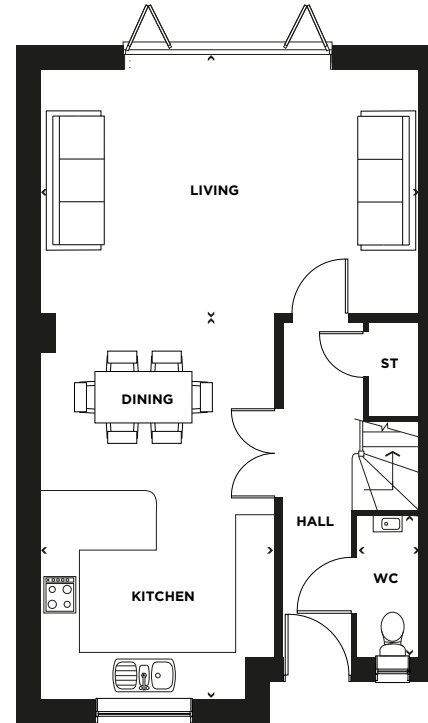
OPEN PLAN KITCHEN AND DINING ROOM WITH
BI-FOLD DOORS LEADING OUT TO A PRIVATE GARDEN |
THREE DOUBLE BEDROOMS | ONE SINGLE BEDROOM

THE BRANDON

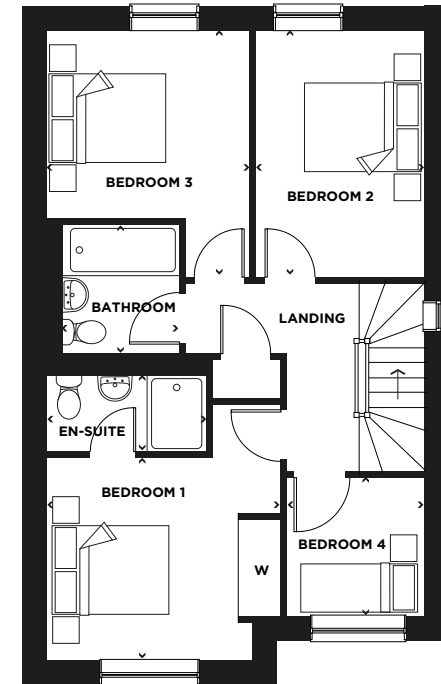
The Brandon is a two storey, four-bedroom home that offers a large open plan kitchen, dining room and living room with bi-fold doors leading out to the garden as well as a guest cloakroom on the ground floor. The first floor comprises of a master bedroom with en-suite, and built-in wardrobes, a 2 further double bedrooms and a single bedroom complete the first floor.

ROOM	M	FT
KITCHEN/DINING	6.0m X 3.6m	(19'8" X 11'10")
LIVING	3.8m X 5.9m	(12'6" X 19'4")
WC	2.2m X 1.0m	(7'3" X 3'3")

ROOM	M	FT
BEDROOM 1	3.1m X 3.6m	(10'2" X 11'10")
EN-SUITE	1.4m X 2.5m	(4'7" X 8'2")
BEDROOM 2	3.8m X 2.6m	(12'6" X 8'6")
BEDROOM 3	2.9m X 3.2m	(9'6" X 10'6")
BEDROOM 4	2.1m X 2.2m	(6'11" X 7'3")
BATHROOM	2.0m X 2.1m	(6'7" X 6'11")



GROUND FLOOR



FIRST FLOOR

DISCLAIMER. These floor plans, elevations and development plan are intended to give a general indication of the proposed layouts and of this scheme. Measurements are approximate and subject to change during the process from planning to build completion. We advise you do not use these dimensions for carpet sizes, appliance spacing or furniture. Individual features such as windows and doors may vary. Brick and other build material colours may vary. Heating and electrical layouts are also subject to change during build. Development landscaping is shown for illustrative purposes only. All images and dimensions are not intended to form part of any contract or warranty. Please note that all images are for illustrative purposes only. All dimensions are + or - 50mm and the plans are not shown to scale.

Please consult our Sales Consultants for plot specific details.