



HEYFORD
FIELDS



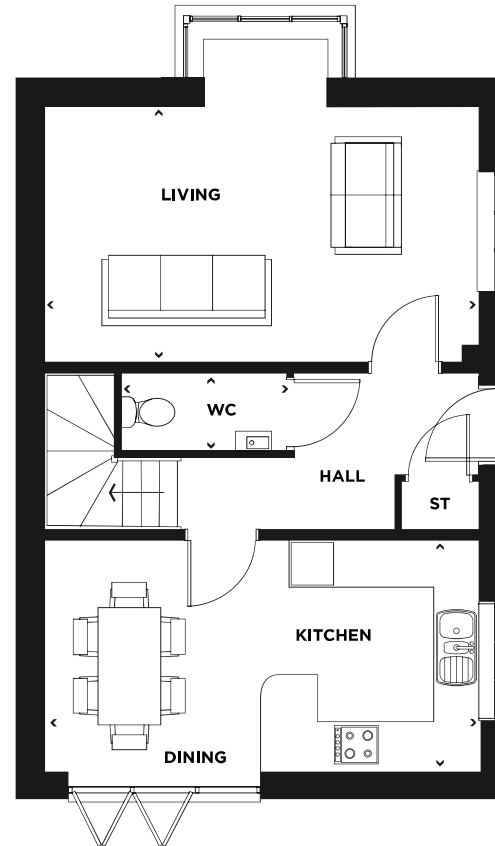
THE RUSSELL

THREE BEDROOM
TWO STOREY HOME
95m² (1025ft²)

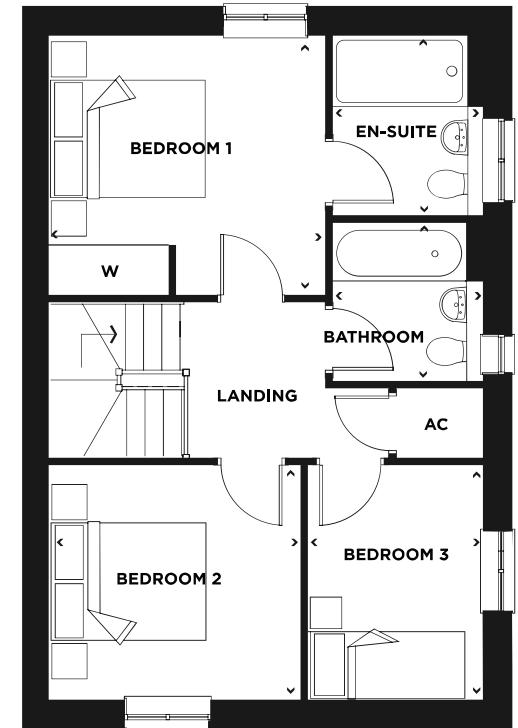
OPEN PLAN KITCHEN AND DINING ROOM WITH
BI-FOLD DOORS LEADING OUT TO A PRIVATE GARDEN |
THREE BEDROOMS | MASTER BEDROOM WITH EN-SUITE

THE RUSSELL

The Russell offers plenty of space for modern living. The open plan kitchen and dining leading out through bi-fold doors to a private garden. A spacious living room and a guest cloakroom completes the ground floor. Upstairs comprises of 2 double bedrooms, with the master including a wardrobe and en-suite bathroom. The main bathroom is found off the landing along side a further single bedroom which completes this floor.



GROUND FLOOR



FIRST FLOOR

ROOM	M	FT
KITCHEN/DINING	2.9m X 5.5m	(9'6" X 18')
LIVING	3.2m X 5.5m	(10'6" X 18')
WC	0.9m X 2.0m	(2'11" X 6'6")

ROOM	M	FT
BEDROOM 1	3.3m X 3.5m	(10'9" X 11'5")
EN-SUITE	2.2m X 1.9m	(7'2" X 6'2")
BEDROOM 2	2.9m X 3.2m	(9'6" X 10'6")
BEDROOM 3	2.9m X 2.2m	(9'6" X 7'2")
BATHROOM	2.0m X 1.9m	(6'6" X 6'2")

DISCLAIMER. These floor plans, elevations and development plan are intended to give a general indication of the proposed layouts and of this scheme. Measurements are approximate and subject to change during the process from planning to build completion. We advise you do not use these dimensions for carpet sizes, appliance spacing or furniture. Individual features such as windows and doors may vary. Brick and other build material colours may vary. Heating and electrical layouts are also subject to change during build. Development landscaping is shown for illustrative purposes only. All images and dimensions are not intended to form part of any contract or warranty. Please note that all images are for illustrative purposes only. All dimensions are + or -50mm and the plans are not shown to scale.

Please consult our Sales Consultants for plot specific details.