

— No. 02 —

HEYFORD POST

— 2019 —

BI-ANNUAL NEWS FOR
HEYFORD PARK

August 2019

OLD STATION NURSERY

*Take a look at why our nursery
is such an essential part of
the community.*

CASE STUDY

*We chat to Heyford Park
homeowner Christine.*



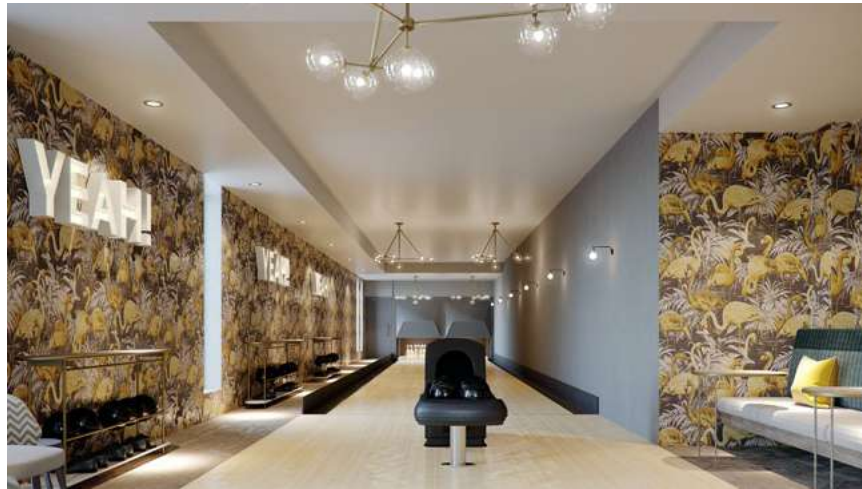
HEYFORD PARK IS A DESTINATION IN THE HEART OF OXFORDSHIRE

As community builders, Dorchester Living's approach focuses not just on building new homes but also on providing a wide range of facilities and amenities and holding a number of community events throughout the year.

This bi-yearly newsletter will provide information on the village centre, our houses, upcoming events and much more, so our Heyford Park residents can find out the latest news and diary dates. Many of our events are also open to the wider community.

OUR VILLAGE CENTRE

The Village Centre Bowling Alley



THE VILLAGE CENTRE SOUTH

A combination of refurbished heritage buildings alongside stylish new build will make up the Village Centre South offerings which will include a restaurant and bar, two lane bowling alley and an eighteen room boutique hotel.

Construction for the Village Centre South began in July 2018 and it is anticipated that the offerings will be open by the end of 2020. More details on the brands and offerings coming soon.

The Village Centre Restaurant



THE VILLAGE CENTRE NORTH

The Village Centre North will consist of a mix of retail and residential units to complement the Village Centre South offerings. Retail units will be built to accommodate a range of local businesses, along with a convenience store to be occupied by Sainsbury's. Above the street level retail units there will be a collection of 30 modern apartments, including shared ownership housing.

Planning permission for the Village Centre North was granted in July 2018 and construction is well underway with the offerings (including Sainsbury's) due to be open by summer 2020. More details on the retail units and apartments coming soon.



The Village Centre Bar

THE OLD STATION NURSERY

The Old Station Nursery is now over a year old and has become an essential part of the community at Heyford Park. The modular build can be found at the far end of Camp Road and the staff team are delighted to now have a crossing right by them, which not only allows parents to walk to the nursery, but allows the team to get out and explore the local area on foot with the children. So, if you see a group of children in 'Old Station Nursery' high vis vests, do say hello to them!

The nursery offers education and care for babies up until the pre-schoolers start school, usually at 4 years old. They are building close links with the Free School, but also have some children who will go to other surrounding Primary Schools, so they are bound to have some nursery friends when they start school. Many of the parents also take

advantage of Government funding to reduce the cost for pre-school children, both with the 15 hours offer and more recently, the 30 hour offer. Jan, the Nursery Manager, can explain how both work, if parents aren't sure – and it is very complicated!

The garden areas at the nursery continue to develop and there is now a special 'baby garden' for use in all weathers, and in the main nursery garden a long canopy area provides a covered area for outdoor learning and will be enjoyed all year round. The nursery team have settled into the community well and have quickly become an important facility for many families. A recent parent survey was full of some lovely compliments, including

"THE SETTING IS TRULY SPECIAL AND ALL OF THE STAFF ARE EXCELLENT. SO LUCKY TO HAVE THEM ON OUR DOORSTEP"



"I CAN SEE THAT MY CHILD IS LEARNING NEW THINGS EVERY DAY AND THAT THE NURSERY ENVIRONMENT IS REALLY STIMULATING FOR HIS DEVELOPMENT. HE IS ALSO DEVELOPING VERY GOOD MANNERS (SAYING PLEASE AND THANK YOU) WHICH ARE REINFORCED AT NURSERY"

"STAFF ARE FRIENDLY AND APPROACHABLE AND I FEEL MY CHILD IS HAPPY SPENDING TIME IN NURSERY. I AM ALSO VERY IMPRESSED WITH THE MEALS AS THEY ARE HEALTHY AND PROMOTE GOOD EATING HABITS"



IF YOU HAVEN'T HAD A CHANCE TO VISIT THE NURSERY YET, DO FEEL FREE TO POP IN AT ANY STAGE AND SAY HELLO TO THE TEAM.

The Old Station Nursery
Camp Road
Heyford Park
OX25 5BS
Tel: 01869 233268
heyford@theoldstationnursery.co.uk
www.theoldstationnursery.co.uk

LIKE MOTHER, LIKE DAUGHTER

WHEN CHRISTINE PRIOR DECIDED TO SELL HER HOUSE IN CHESTERTON AND MOVE TO HEYFORD PARK, A GROWING COMMUNITY BUILT BY DORCHESTER LIVING, IT WAS AN UNUSUAL CASE OF DAUGHTER KNOWS BEST.



After making the hard decision to put her family home on the market, Christine decided to check out the Heyford Park scheme after her daughter had bought there. Having liked the area so much, Christine went on to purchase a four-bedroom detached house.

Christine, who lives at the house with her rescue dog Norman, has moulded the property to fit her lifestyle. One of the bedrooms has been converted into a dressing room whilst the other two bedrooms have been converted into a home study and guest bedroom.

One of the biggest perks of the new home for Christine is having a huge amount of green space on her doorstep. She commented:

"The countryside really is at your disposal. Obviously Norman is a big fan and it's brilliant to have rolling green fields within moments of the house. Bicester is only 10 minutes away – it is honestly the best of both worlds."

"I also have a private garden at my house, so I'm looking forward to enjoying that in the warmer months and entertaining guests. I haven't had a summer at the house yet – I can't wait!"

Not only do the mother daughter duo live moments from each other, but they also work together too. The journey to work is only a 20-minute drive via the A34 into Oxford and is something that they often share. Speaking of her experience with the buying process, Christine could not have been more pleased with the service.

"Everyone at Dorchester made the process so much easier. Even to this day, they have been really kind, trusting and friendly, which is extremely helpful in a somewhat stressful decision. It's great to know there is a strong support system if anything were to go wrong with the house."

Making the decision for a new beginning was a big commitment for Christine, however the convenience of having her daughter only a four-minute walk away was a calming reassurance. It also gave her daughter a new side project.

"My daughter is really into her interior design, so she helped me kit the house out. It was quite the therapeutic process as we got to start from scratch with a blank canvas. The house looks fantastic and I just love coming home."

HOUSE OF THE MONTH

FEATURED HOME

THE GILBERT



ONLY 1 PLOT AVAILABLE OF THIS HOUSETYPE

Plot 409 - £399,995

Detached with single garage

Open-plan kitchen and dining room with bi-folding doors to the garden

Separate living room with second set of bi-folding doors

En-suite to master bedroom

South facing garden

Available using the Help to Buy and Assisted Move schemes

Ready for occupation Autumn 2019

Dorchester Living have a selection of homes available at Heyford Park. Our current available properties are listed on our website and our sales consultants will be able to give you further information about upcoming properties and phases. Our selection of showhomes are open daily, 10am to 5pm.

FIND OUT MORE ABOUT A HEYFORD PARK COMMUNITY GROUP

IN THIS EDITION WE FOCUS ON... HEYFORD AARDVARKS

Heyford Aardvarks is a running club based at Heyford Park and founded by Thomas Hunter, a Heyford Park resident. The club took its name from the last plane to be stationed at Heyford Park (an Aardvark) and began life as a conversation on Facebook. It has quickly grown into a successful weekly running club of 15-20 people. Thomas Hunter, founding member of the Aardvarks, commented: "I could never have dreamt that a social media post would have grown to the success of what the club is now. Since gaining sponsorship we have been able to put some of our committee members through coaching courses in order to better support our club members. We even have some merchandise to wear when we enter our cross-country events."

The club meets regularly and caters for new runners, intermediates, marathon runners and even ultra-runners. For more information, join their Facebook group: Heyford Aardvarks Running Club.



Image from Race at the Base

UPCOMING EVENTS AT HEYFORD PARK



LOOK OUT FOR OUR
ANNUAL LETTER TO SANTA
COMPETITION WHICH WILL BE
RUNNING IN NOVEMBER AND
DECEMBER AGAIN THIS YEAR



THE BARTLETT SHOWHOME LAUNCH

The Bartlett is a 3 bedroom, end of terrace townhouse with an open-plan kitchen, dining room and living room on the first floor and a family room on the ground floor with bi-folding doors leading to garden. The master bedroom benefits from an en-suite and all plots have an integral garage. Prices from £389,995 and all plots available on the Help to Buy and Assisted Move schemes. Join us at the launch weekend to view this new housetype on our most recent phase.

LOCATION: The Sales Suite at Heyford Park
DATE: 7th & 8th September 2019



INFLATABLE 5K OBSTACLE COURSE

Join us for a 5k with a difference! UK Running will be holding a 5k route with 15 gigantic inflatable obstacles. More information and entry details can be found on their website: www.ukrunningevents.co.uk

LOCATION: The Runway at Heyford Park
DATE: 28th & 29th September 2019



HEYFORD PARK
OXFORDSHIRE

People Make Places

**HEYFORD PARK IS THE EXCLUSIVE NEW
OXFORDSHIRE ADDRESS THAT IS REDEFINING
WHAT IT MEANS TO BE PART OF A COMMUNITY.**

Where many developments are primarily focused on build-form, we're just as interested in people. What often attracts people to a scheme isn't necessarily the homes themselves but the community they become a part of.

Heyford Park gives you the best of both worlds: high-quality houses in an area where people want to live.

*To become part of our community call,
or visit our website.*

01869 238 238 www.heyfordpark.co.uk



DORCHESTER
LIVING