

# The Townsend

3 bedroom home - 895 sq ft

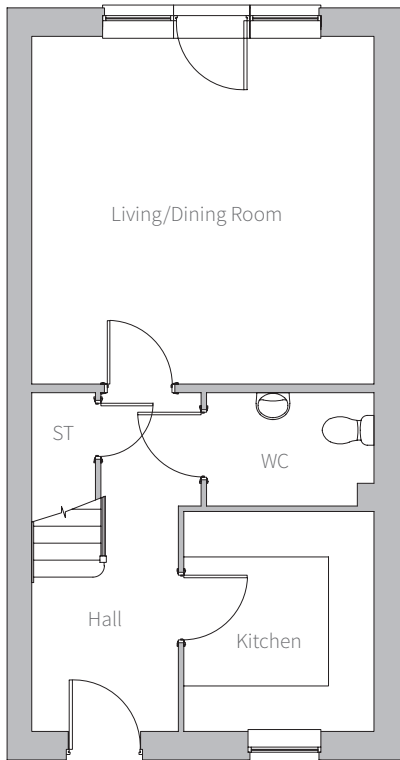


## Ground Floor

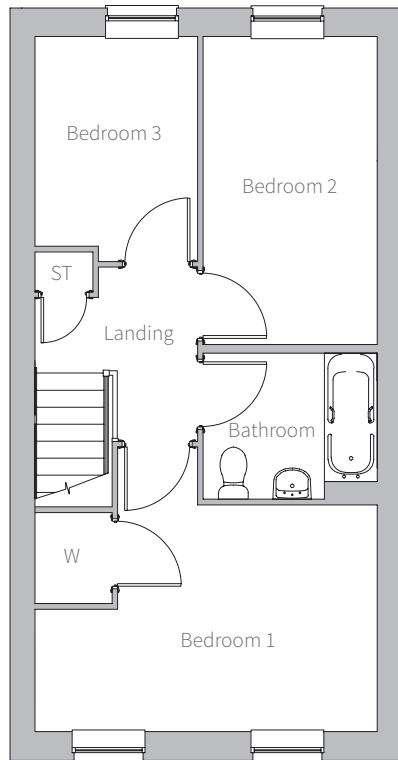
Kitchen		
2.9m x 2.5m	9'6" x 8'3"	
Living / Dining Room		
4.6m x 4.5m	15'1" x 14'10"	
WC		
2.2m x 1.5m	7'3" x 4'11"	

## First Floor

Bedroom 1		
4.5m x 3.0m	14'10" x 9'10"	
Bedroom 2		
4.1m x 2.3m	13'4" x 7'6"	
Bedroom 3		
3.0m x 2.2m	9'8" x 7'1"	
Bathroom		
2.3m x 1.9m	7'6" x 6'3"	



Ground Floor



First Floor

Disclaimer: These floor plans, elevations and development plan are intended to give a general indication of the proposed layouts and of this scheme. Measurements are approximate and are subject to change during the process from planning to build completion. We advise you do not use these dimensions for carpet sizes, appliance spacing or furniture. Individual features such as windows and doors may vary. Brick and other build material colours may vary. Heating and electrical layouts are also subject to change during build. Development landscaping is shown for illustrative purposes only. All images and dimensions are not intended to form part of any contract or warranty. Please note that all images are for illustrative purposes only. All measurements may vary within a tolerance of 5% and the plans are not shown to scale. Please consult our sales consultants for plot specific details.

CONSUMER  
CODE  
FOR  
HOME BUILDERS  
[www.consumercode.co.uk](http://www.consumercode.co.uk)



HEYFORD PARK  
OXFORDSHIRE



01869 238200  
[www.heyfordregeneration.co.uk](http://www.heyfordregeneration.co.uk)