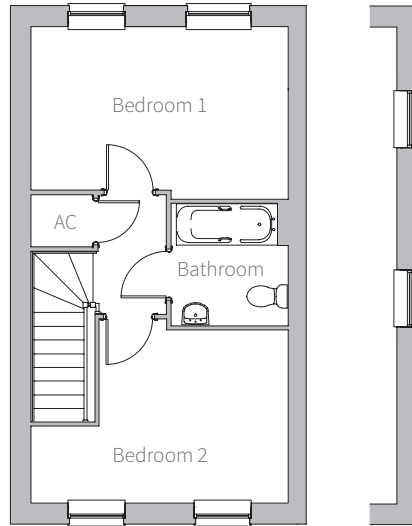
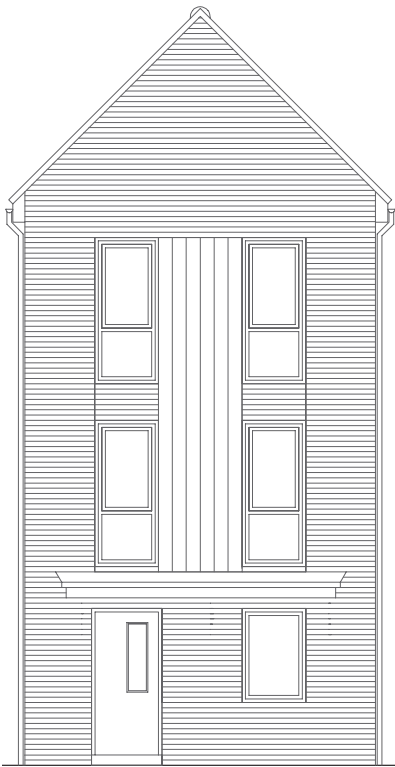
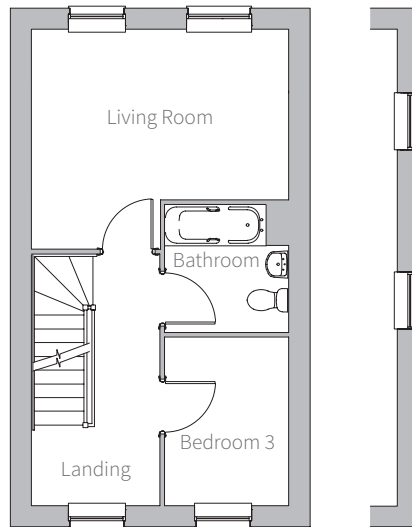


The Chilgrove

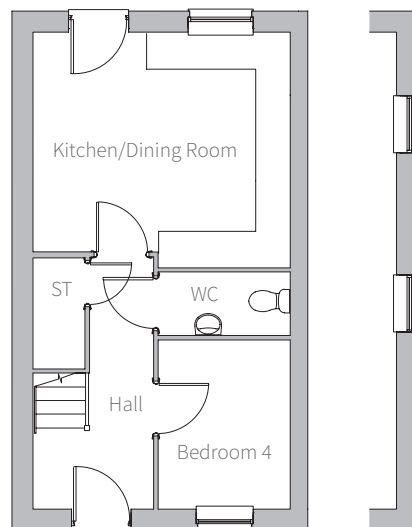
4 bedroom home - 1112 sq ft



Second Floor



First Floor



Ground Floor

Ground Floor

- Kitchen / Dining Room
4.3m x 3.7m 14'1" x 12'1"
- Bedroom 4
2.8m x 2.2m 9'3" x 7'3"
- WC
2.2m x 1.1m 7'2" x 3'5"

First Floor

- Living Room
4.3m x 3.7m max 14'1" x 12'1" max
- Bedroom 3
2.8m x 2.1m 9'3" x 6'9"
- Bathroom
2.1m x 2.1m 7'0" x 6'9"

Second Floor

- Bedroom 1
4.3m x 2.8m 14'1" x 9'1"
- Bedroom 2
3.2m x 2.9m 10'4" x 9'6"
- Bathroom
2.2m x 2.0m 7'3" x 6'8"

*Windows to plots 373 and 377 only

Disclaimer: These floor plans, elevations and development plan are intended to give a general indication of the proposed layouts and of this scheme. Measurements are approximate and are subject to change during the process from planning to build completion. We advise you do not use these dimensions for carpet sizes, appliance spacing or furniture. Individual features such as windows and doors may vary. Brick and other build material colours may vary. Heating and electrical layouts are also subject to change during build. Development landscaping is shown for illustrative purposes only. All images and dimensions are not intended to form part of any contract or warranty. Please note that all images are for illustrative purposes only. All measurements may vary within a tolerance of 5% and the plans are not shown to scale. Please consult our sales consultants for plot specific details.

**CONSUMER
CODE
FOR
HOME BUILDERS**
www.consumercode.co.uk



HEYFORD PARK
OXFORDSHIRE



01869 238200
www.heyfordregeneration.co.uk